

Installation

eXtreme Burner 51

An Easy To Use USB Programmer for AT89S series MCUs.

This document will give you step by step guide to install your new programmer in your system. For any problems contact the [support department](#).

Connect the programmer to any available USB Port on your system by using an appropriate cable(provided with kit). The green light on Programmer should glow.

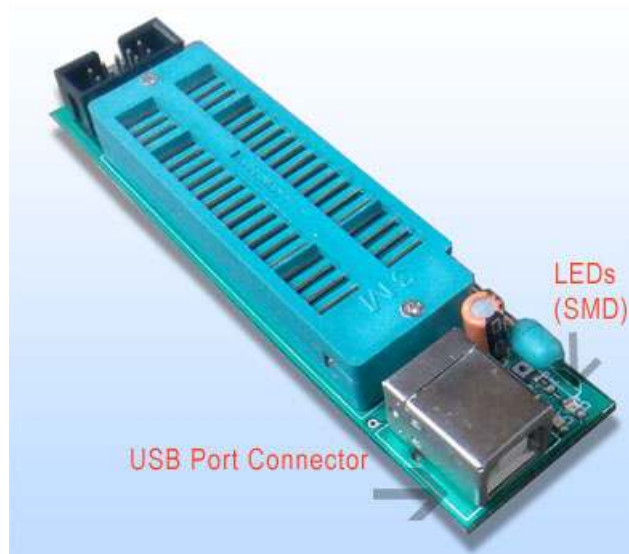


Fig -eXtreme Burner 51

Now Window® should detect the new hardware and show you the following message.

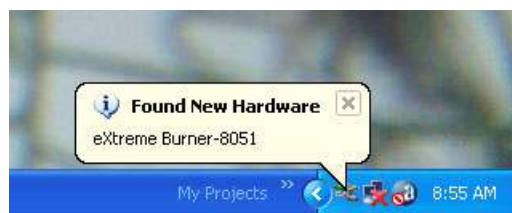


Fig - Found New Hardware

Then it will present you with the following message.

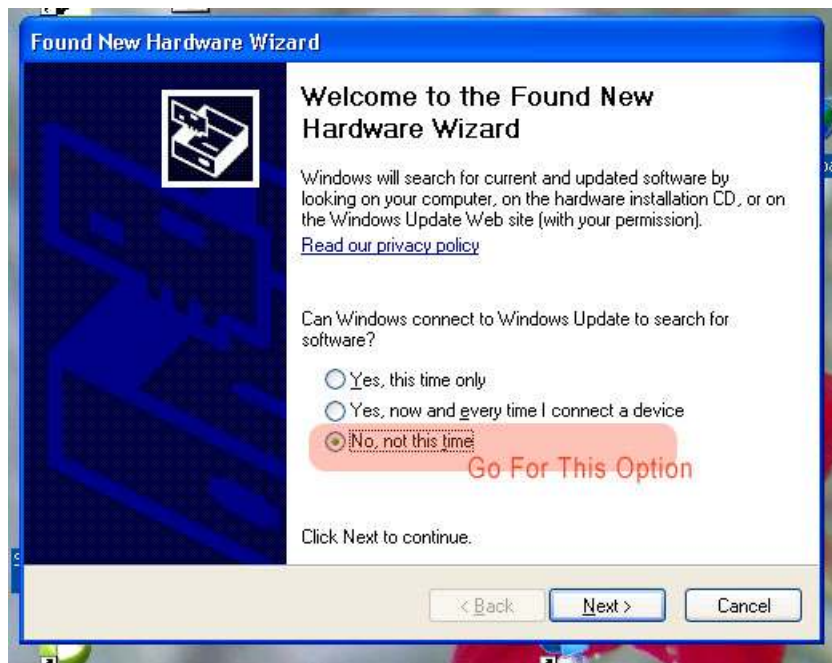


Fig - Found New Hardware

Windows® asks you whether it should connect to internet to get the drivers. Select **"No, Not this time"** and select **Next**.

On the next screen Windows® request you to insert the installation CD. Now insert the **Support CD** that came with the programmer into your CD/DVD drive.

Select the second option **"Install From a list or specific location"** and click **Next**.

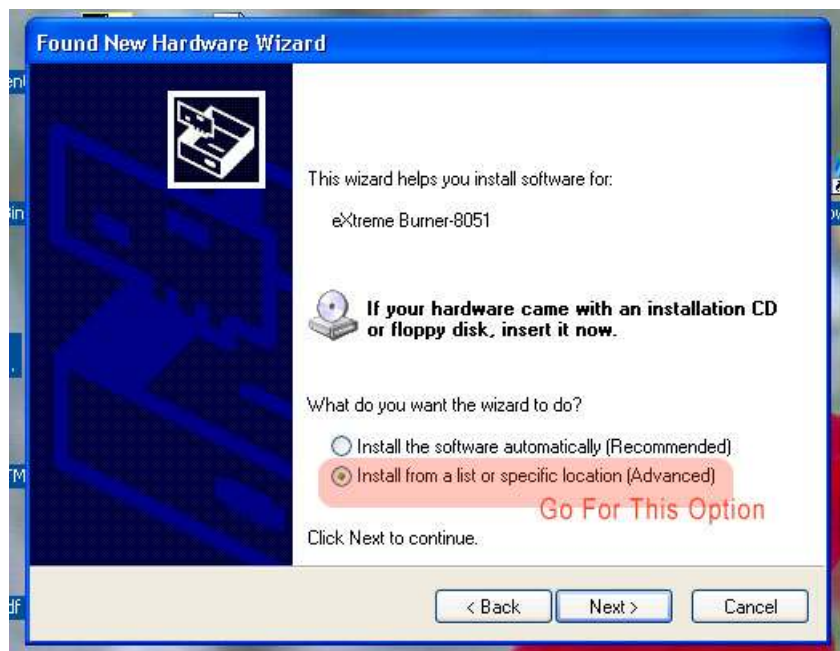


Fig - Found New Hardware

Now, on the next screen

- Select - "Search for the best driver in these locations"
- Select - "Search Removable Media".
- Select - "Include this location in the search".

Click browse and select the folder **"Driver"** inside the folder **"eXtremeBurner51"** on the Support CD. Click next.

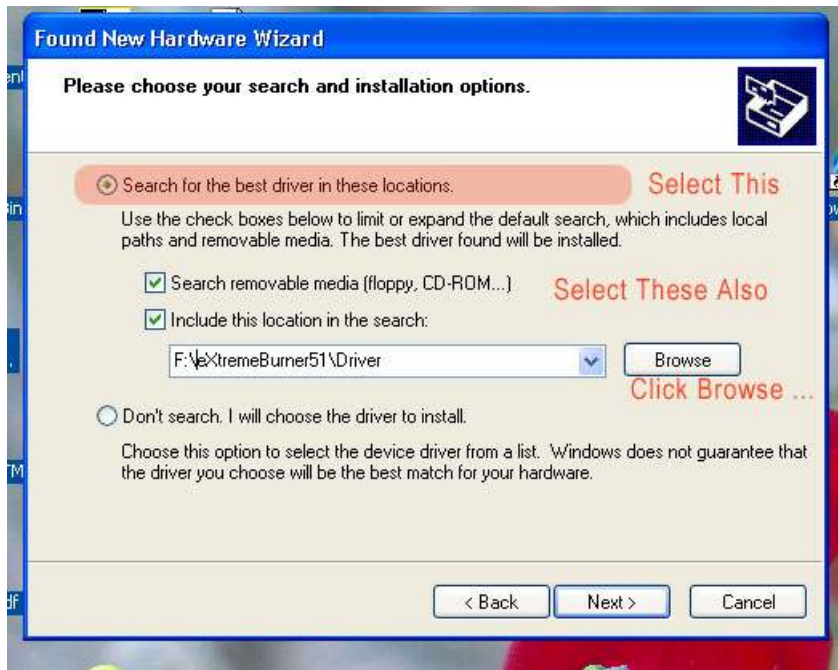


Fig - Found New Hardware

Now Windows starts installing the driver. If it asks the "Driver Is not signed with Microsoft" select continue and proceed with installation.

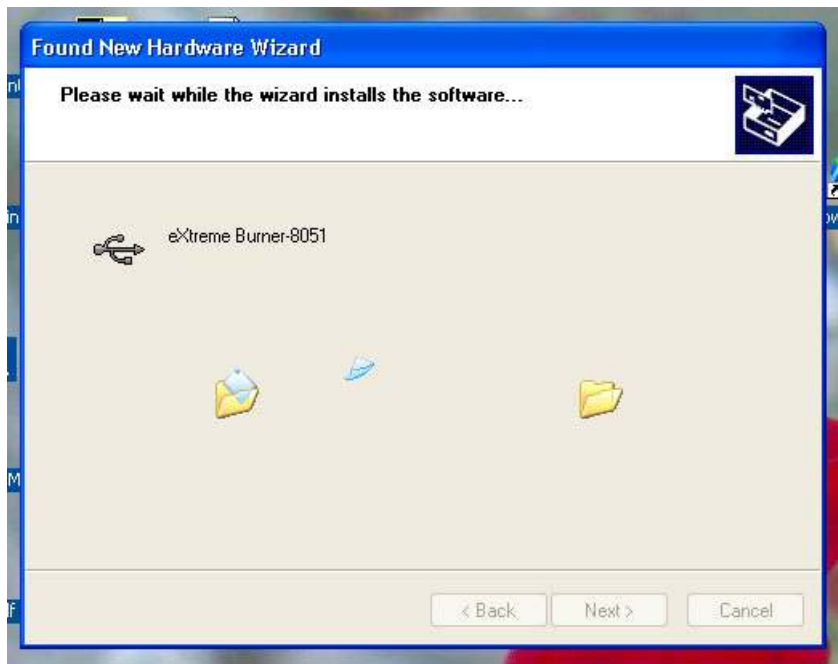


Fig - Found New Hardware

After Windows completes the Installation it informs you with the following screen.



Fig - Found New Hardware

Click Finish and your new programmer is ready for use.

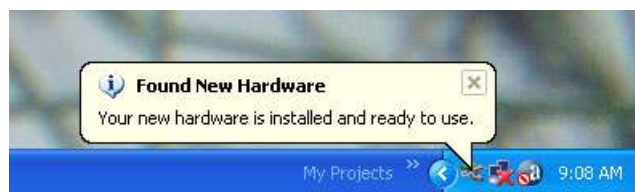


Fig - Found New Hardware

From the next time you just need to connect the programmer to your PC and it will become usable. An easy to use GUI software is provided for burning hex files to 89S MCUs. To learn how to use it [see this](#).

Installing the Programmer Software.

Go the folder "eXtreme Burner 51/Software/eXtreme Burner 51/" and run "setup.exe" Follow the onscreen instructions.