

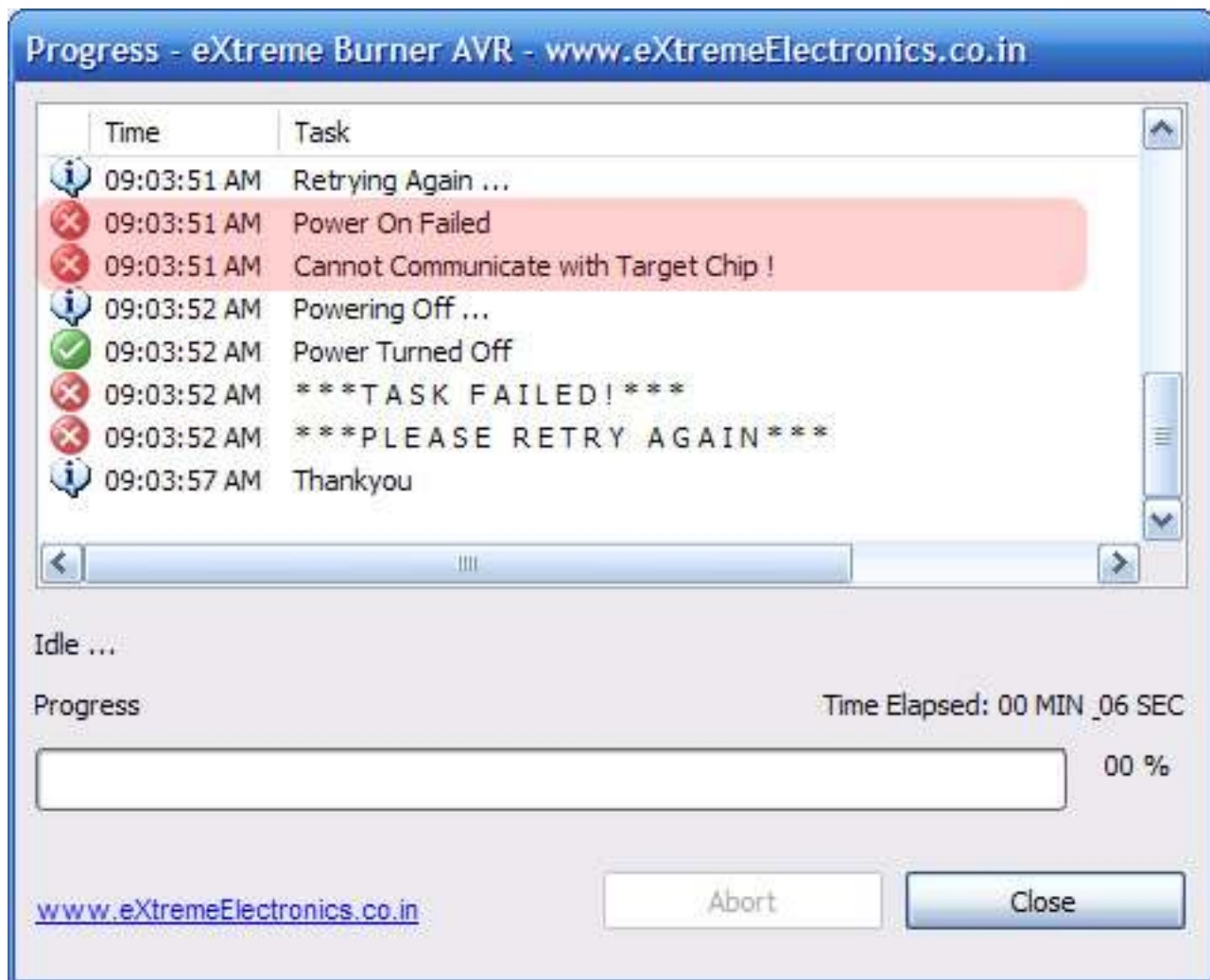
# Troubleshooting

## USB AVR Programmer

If you are having any problem, this section may be helpful to you.

### Problem

Power On Failed  
Cannot Communicate with Target Chip!

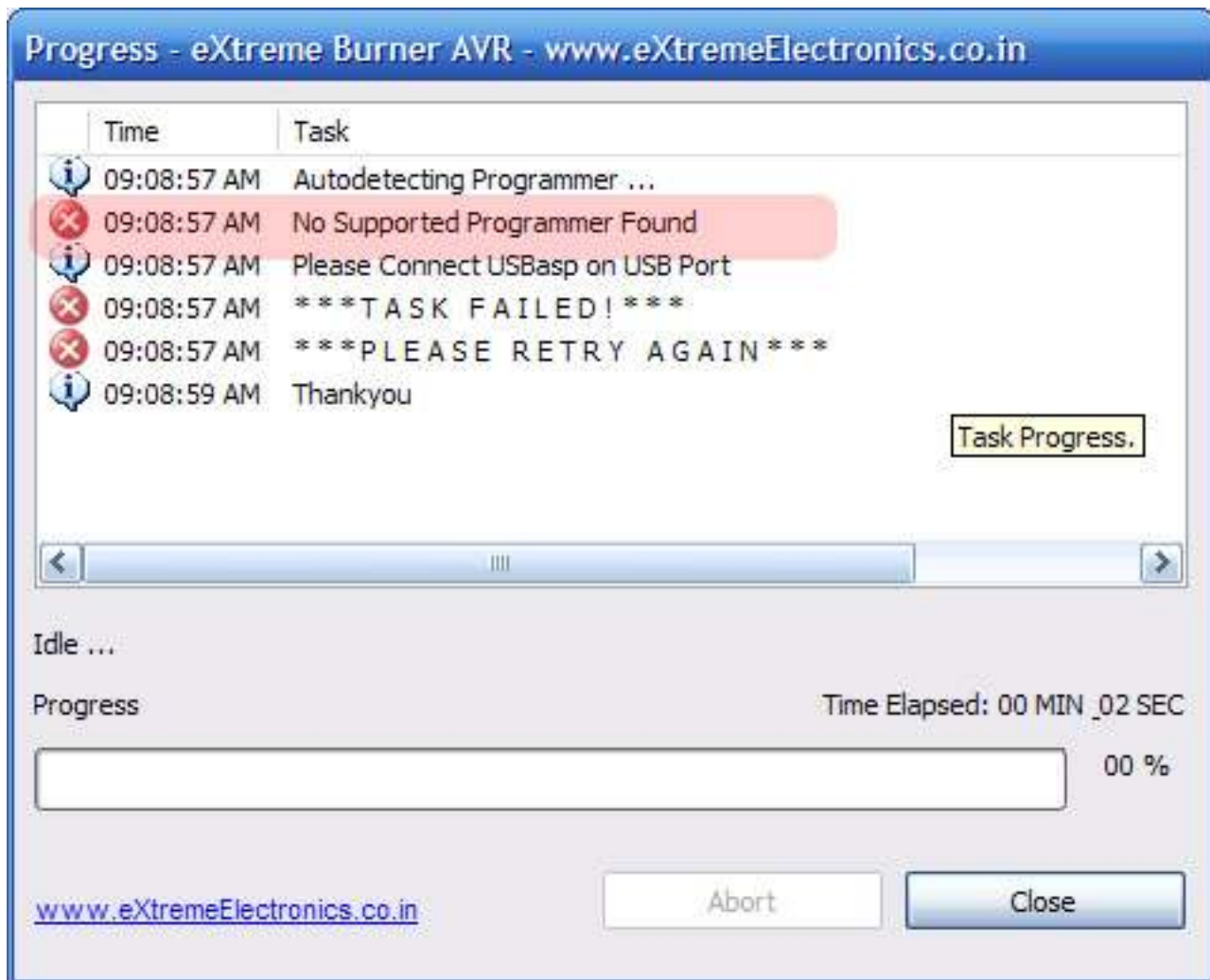


### Causes

- \* The ISP connections are not connected properly. Make sure you have designed the target correctly so that ISP connector connects with the correct PINS of the MCU. The signal names are clearly mentioned in the programmer PCB.
- \* The target is switched off.
- \* The crystal is not connected properly and the CPU is not running.

## Problem

No Supported Programmer Found



## Causes

\*USB cable is broken.

\*Programmer is not installed correctly. See the installation guide in CD.

If USB Cable is OK and Programmer is also installed correctly then please do the following

1. Close **eXtreme Burner - AVR**
2. Go to the folder where you have installed **eXtreme Burner - AVR** (like C:\Program Files\eXtreme Burner - AVR\.)
3. Delete **libusb0.dll** and **libusb0.sys**
4. Launch **eXtreme Burner - AVR** again.